

Corners to be Indexed

N1/4 33-107-40
NE 33-107-40
E1/4 33-107-40

FEB 14 2023

Karen Brown

I hereby certify that this document and the data contained herein was prepared by me or under my direct supervision.

Daniel L. Buelte
Daniel L. Buelte

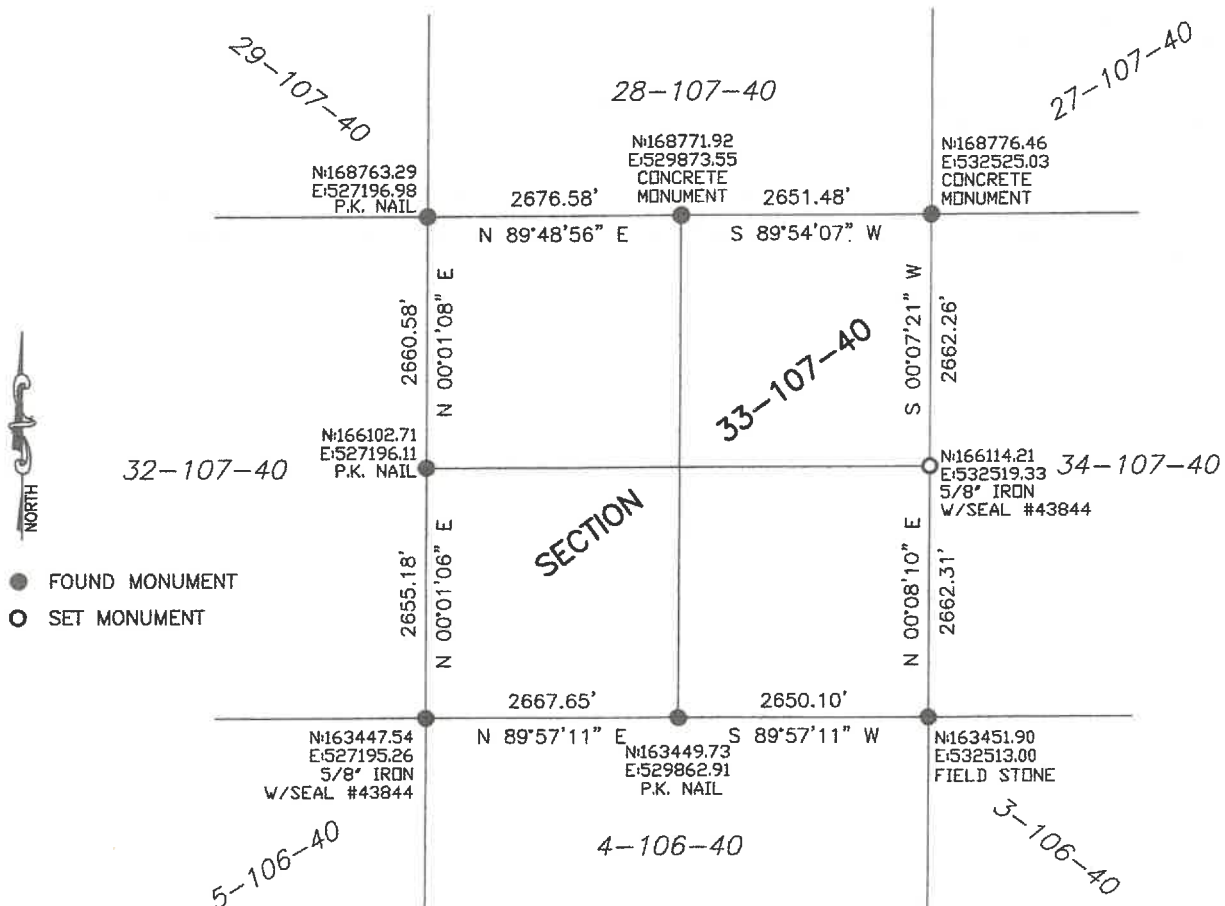
License No. 43844

1/17/2023
Date

CERTIFICATE OF LOCATION OF GOVERNMENT CORNER

Land survey monuments situated in Section 33, Township 107, Range 40, 5TH P.M.

STATE OF MINNESOTA, County of MURRAY



Murray County Coordinate System (1996 Adj.)

Statement of Evidence

N1/4 33-107-40

On October 10, 1985, Murray County Highway Department located a concrete monument with a railroad spike on the west side.

On April 15, 2022 Bueltel-Moseng Land Surveying found a 6" concrete monument with a railroad spike on the west side.

NE 33-107-40

On March 25, 1980, Murray County Highway Department found a concrete monument 2" below the road surface.

On April 15, 2022, Bueltel-Moseng Land Surveying found a 6" concrete monument at the roads surface. Placed a $\frac{5}{8}$ " iron along the west side of the monument. Monument fell in line with road running east-west and 13' east of road running north-south.

E1/4 33-107-40

On July 8, 1992 Murray County Highway Department located a concrete monument and a $\frac{1}{2}$ " iron with seal #12967.

On April 15, 2022, Bueltel-Moseng Land Surveying could not locate the monument or iron. Then set a $\frac{5}{8}$ " iron with seal #43844 using Madsen survey from 1992. Corner fell 15'± east of center line.